

Shaft

Wall Thickness	3.7 mm (0.145")
Round HSS Outside Diameter	48.3 mm (1.9")
Available Standard Lengths	2.1 m (7'-0") / 3.2 m (10'-6")

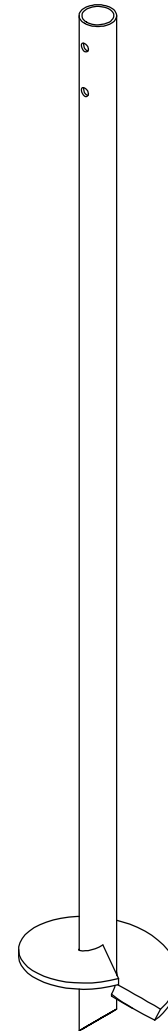
Load Specifications

Max. Allowable Capacity	30 kN (6,800 lb)
-------------------------	------------------

Technical Specifications

Commonly Used Structure*	Light Residential
Code Evaluation	Listed per CCMC (13059-R)
Standard Steel	ASTM A500 Grade C Fy=350 MPa min (51 ksi)
Black Steel Design Life	Min 50 years
Coating	Galvanized or Black Steel
Galvanization Compliance	ASTM A123/A123M/A123M
Additional Corrosion Protection	Cathodic Protection System available

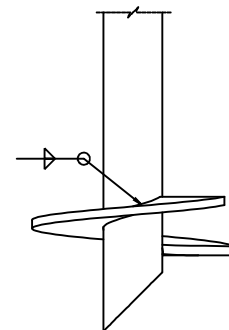
* Refer to the selection table on p.8.



Helix

Pitch	76.2 mm (3")
Thickness	9.5 mm (0.375")
Standard Steel	CSA G40.21-300W Fy=300 MPa min (44 ksi)
Coating	Galvanized or Black Steel
Multiple Welded Helix	Available
Helix Size*	152 mm (6") to 305 mm (12")

* Other sizes available upon request.

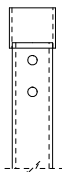


Sleeve (Available)

Function Utility	Protection against soil movements
Wall Thickness	1.6 mm (1/16")
Round HSS Outside Diameter	± 54.2 mm (± 2.125")
Length	± 1.67 m (± 66")
Weight	± 0.41 kg (± 0.9 lb)
Material	HDPE
Color	Green



Outside Couplings



Regular

Assembly	Welded
Wall Thickness	4 mm (0.154")
Round HSS Outside Diameter	60.3 mm (2.375")
Standard Steel	ASTM A500 Grade C
	Fy=350 MPa min (51 ksi)
Length*	31.8 mm (1.25")

* Length of outside coupling welded on-site.