

## Shaft

Wall Thickness	5.5 mm (0.216")
Round HSS Outside Diameter	88.9 mm (3.5")
Available Standard Lengths	2.1 m (7'-0") / 3.2 m (10'-6")

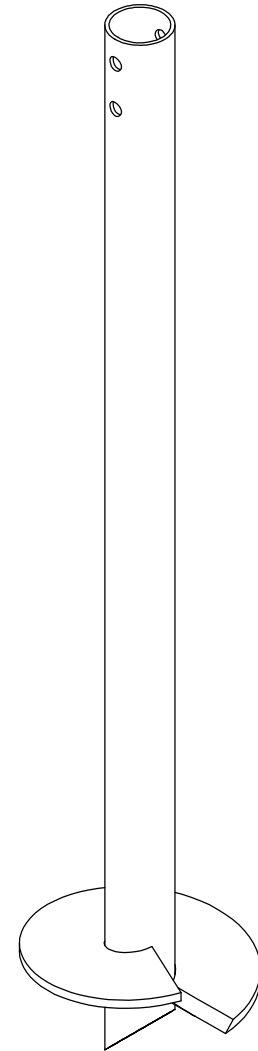
## Load Specifications

Max. Allowable Capacity	150 kN (33,750 lb)
-------------------------	--------------------

## Technical Specifications

Commonly Used Structure*	Heavy Residential
	Light to Medium Commercial
	Industrial
Code Evaluation	Listed per CCMC (13059-R)
Standard Steel	ASTM A500 Grade C Fy=350 MPa min (51 ksi)
Black Steel Design Life	Min 50 years
Coating	Galvanized or Black Steel
Galvanization Compliance	ASTM A123/A123M/A123M
Additional Corrosion Protection	Cathodic Protection System available

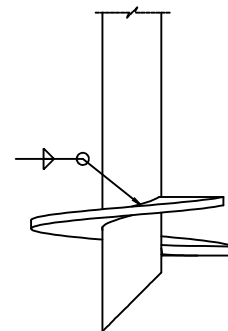
\* Refer to the selection table on p.8.



## Helix

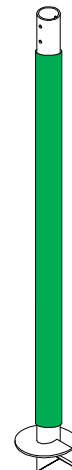
Pitch	76.2 mm (3") / 127 mm (5")
Thickness	12.7 mm (0.5")
Standard Steel	CSA G40.21-300W Fy=300 MPa min (44 ksi)
Coating	Galvanized or Black Steel
Multiple Welded Helix	Available
Helix Size*	203 mm (8") to 610 mm (24")

\* Other sizes available upon request.

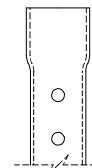
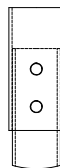
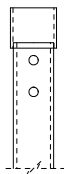


## Sleeve (Available)

Function Utility	Protection against soil movements
Wall Thickness	1.6 mm (1/16")
Round HSS Outside Diameter	± 95.2 mm (± 3.75")
Length	± 1.67 m (± 66")
Weight	± 0.68 kg (± 1.5 lb)
Material	HDPE
Color	Green



## Outside Couplings



	Regular	Reinforced	Expanded
Assembly	Welded	Welded	-
Wall Thickness	5.7 mm (0.197")	5.7 mm (0.197")	4.8 mm (0.188")
Round HSS Outside Diameter	101.6 mm (4")	101.6 mm (4")	101.6 mm (4")
Standard Steel	ASTM A500 Grade C Fy=350 MPa min (51 ksi)	ASTM A500 Grade C Fy=350 MPa min (51 ksi)	ASTM A500 Grade C Fy=350 MPa min (51 ksi)
Length*	88.9 mm (3.5")	222.3 mm (8.75")	63.5 mm (2.5")

\* Length of outside coupling welded on-site.