

Shaft

| | |
|----------------------------|--------------------------------|
| Wall Thickness | 0.216" (5.5 mm) |
| Round HSS Outside Diameter | 3.5" (88.9 mm) |
| Available Standard Lengths | 7'-0" (2.1 m) / 10'-6" (3.2 m) |

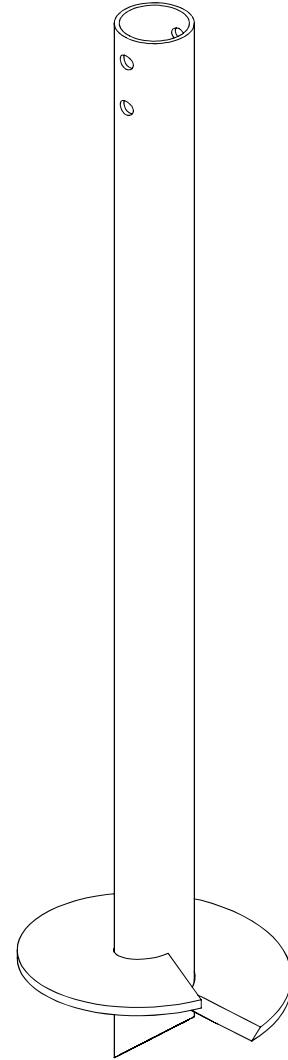
Load Specifications

| | |
|--|--|
| Max. Installation Torque : | |
| with Regular and Expanded coupling | 8,509 ft-lb (11,527 N-m) |
| with Reinforced coupling | 11,000 ft-lb (14,902 N-m) |
| Max. Allowable Capacity* | 29.8 kips (132.4 kN) to 33 kips (146.7 kN) |

* Higher load ratings could be considered with site-specific engineering.

Technical Specifications

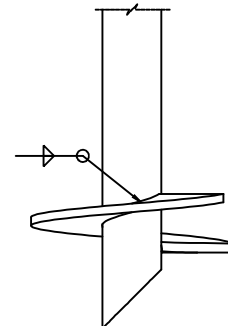
| | |
|---------------------------------|---|
| Commonly Used Structure | Heavy Residential Light to Medium Commercial Industrial |
| Code Evaluation | Listed per ICC-ES (ESR-3418) / IAPMO-UES (ER-481) |
| Standard Steel | ASTM A500 Grade C Fy=51 ksi min (350 MPa) |
| Black Steel Design Life | 50 years per AC358 |
| Coating | Galvanized or Black Steel |
| Galvanization Compliance | ASTM A123/A123M |
| Additional Corrosion Protection | Cathodic Protection System available |



Helix

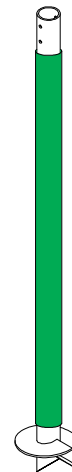
| | |
|-----------------------|---|
| Pitch | 3" (76.2 mm) / 5" (127 mm) |
| Thickness | 0.5" (12.7 mm) |
| Standard Steel | CSA G40.21-44W Fy=44 ksi min (300 MPa) |
| Coating | Galvanized or Black Steel |
| Multiple Welded Helix | Available |
| Helix Size* | 8" (203 mm) to 24" (610 mm) |

* Other sizes available upon request.

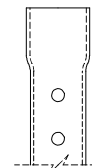
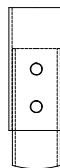
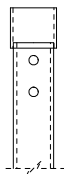


Sleeve (Available)

| | |
|----------------------------|-----------------------------------|
| Function Utility | Protection against soil movements |
| Wall Thickness | 1/16" (1.6 mm) |
| Round HSS Outside Diameter | ± 3.75" (± 95.2 mm) |
| Length | ± 66" (± 1.67 m) |
| Weight | ± 1.5 lb (± 0.68 kg) |
| Material | HDPE |
| Color | Green |



Outside Couplings



| | Regular | Reinforced | Expanded |
|----------------------------|--|--|--|
| Assembly | Welded | Welded | - |
| Wall Thickness | 0.226" (6 mm) | 0.226" (6 mm) | 0.188" (4.8 mm) |
| Round HSS Outside Diameter | 4" (102 mm) | 4" (102 mm) | 4" (102 mm) |
| Standard Steel | ASTM A500 Grade C Fy=51 ksi min (350 MPa) | ASTM A500 Grade C Fy=51 ksi min (350 MPa) | ASTM A500 Grade C Fy=51 ksi min (350 MPa) |
| Length* | 3.5" (88.9 mm) | 8.75" (222.3 mm) | 2.5" (63.5 mm) |

* Length of outside coupling welded on-site.